

## Parameters

### Electrical Parameters:

Power Supply	DC12-30V
Communication interface	PieroNet

### Environmental Conditions:

Working temperature	-5°~45°C
Working relative humidity	Up to 90%
Storage temperature	-20°~+60°C
Storage relative humidity	Up to 93%

### Approved:

CE, RoHS

### Product Information:

Dimensions	83.5×83.5×26.5 (mm)
Net weight	96(g)
Housing material	Steel, ABS
Installation	EU wall box
Protection rating	IP20

## Important Notes

- PieroNet cable — 0.8mm single-core copper cable.
- PieroNet Connection — Series connection (hand-in-hand).
- It must work in conjunction with panel or sensor.

## Installation Steps

- Connect PieroNet cables. Make sure the color of wire complies with the definition.
- Make sure the PieroNet cable type is correct and has no short circuit.
- Mount the KP-POWER-EU in the wall-box.
- Make conjunction with KP-POWER-EU and panel.

## Overview



KP-POWER-EU Panel switch power docking base provides the DC power and communicates with the panel switch signal, it supports different new generation on wall mount switches and wall mount new sensors.

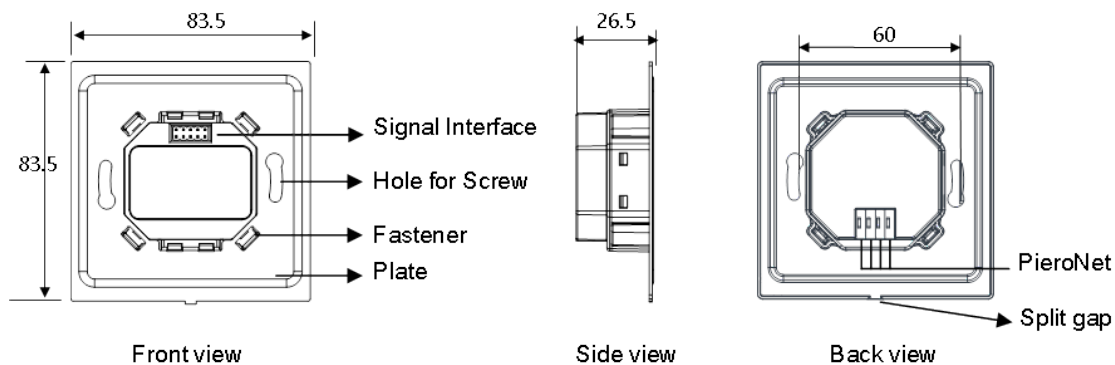
## Functions

- This docking base is the universal base for different switches.
- It has the Piero-PieroNet interface. It must work in conjunction with panel or sensor

## PieroNet Cable Guide

CAT5/CAT5E	PieroNet
Brown / Orange	24V DC
Brown white / Orange white	COM
Blue white / Green white	DATA-
Blue / Green	DATA+

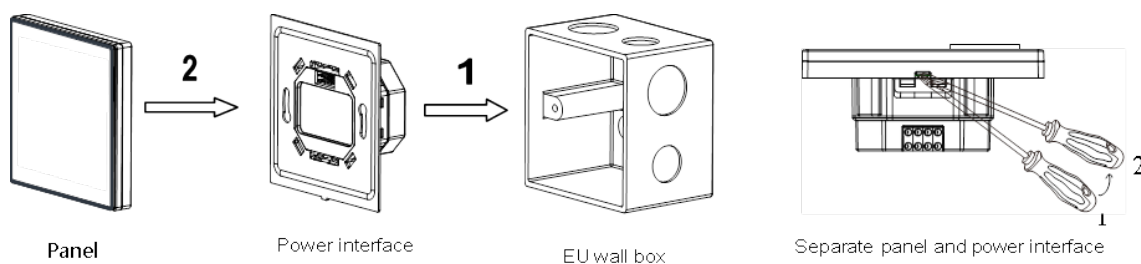
## Dimensions and Wiring



**Signal Interface and fastener:** To be connected with the panel switch or sensor.

**Hole for Screw:** Fix the docking base into the back box.

## Installation



**Installation:** Hold the edge of the panel (shown as above grey area), insert the power interface module vertically. Do not push the panel too hard.

**Split:** Insert a 2.5mm-screwdriver to the split gap, pry up from Position 1 to 2, then the wiring hole will open. Then separate the panel and power interface.

## Safety Precautions



- The screw down strength should not exceed 0.1Nm.
- It must work in conjunction with panel or sensor.
- Do not make wrong connection on PieroNet interface, it will damage the PieroNet interface of this module.
- Do not let liquids and corrosive gases come into contact with the module, it will damage this device.
- Do not get AC power into PieroNet wire, it will damage all devices in the system.
- Ensure a good ventilation.

## Package Contents

- KP-POWER-EU, Datasheet x1, PieroNet Connector x1, Screw x2