

Parameters

Electrical Parameters:

Working voltage	15-30V DC Class 2
PieroNet power consumption	35mA/24V DC
Maximum current per CH	5A
Relay life time	60000 times
AC motor type	Single-phase capacitor

Environmental Conditions:

Working temperature	-5°-45°
Working relative humidity	Up to 90%
Storage temperature	-20°-+60°
Storage relative humidity	Up to 93%

Approved:

CE, RoHS, UL

Product Information:

Dimensions	72×90×66 (mm)
Net weight	250(g)
Housing material	Nylon, PC
Installation	35mm DIN rail installation
Installation Position	Distribution box (DB)

PieroNet Cable Guide

CAT5/CAT5E	PieroNet
Brown / Orange	24V DC
Brown white / Orange white	COM
Blue white / Green white	DATA-
Blue / Green	DATA+

Installation Steps

- Mount suitable fuse or MCB for AC power protection
- Labeling for AC power wires, Motor wires and PieroNet wire
- Make sure the current of each motor is less than 5A
- Connect wires for motor and AC power, make sure there is no short circuit or open circuit
- Connect PieroNet cables. Make sure the color of wire complies with the definition
- Make sure the PieroNet cable type is correct and has no short circuit
- Tidy all the wires. Separate PieroNet wire and AC power wire

Overview



SHADE2 is a professional two curtains(shutters) controller. The curtain module can only control the curtain by AC motor. Each curtain can set running time for closing the AC power if the curtain limit switch is failed. Each channel has inching function, it allows users to control the motor in short time, such as changing the angle of shutter. Pieronet can control the curtain from iPad, iPhone local and internet.

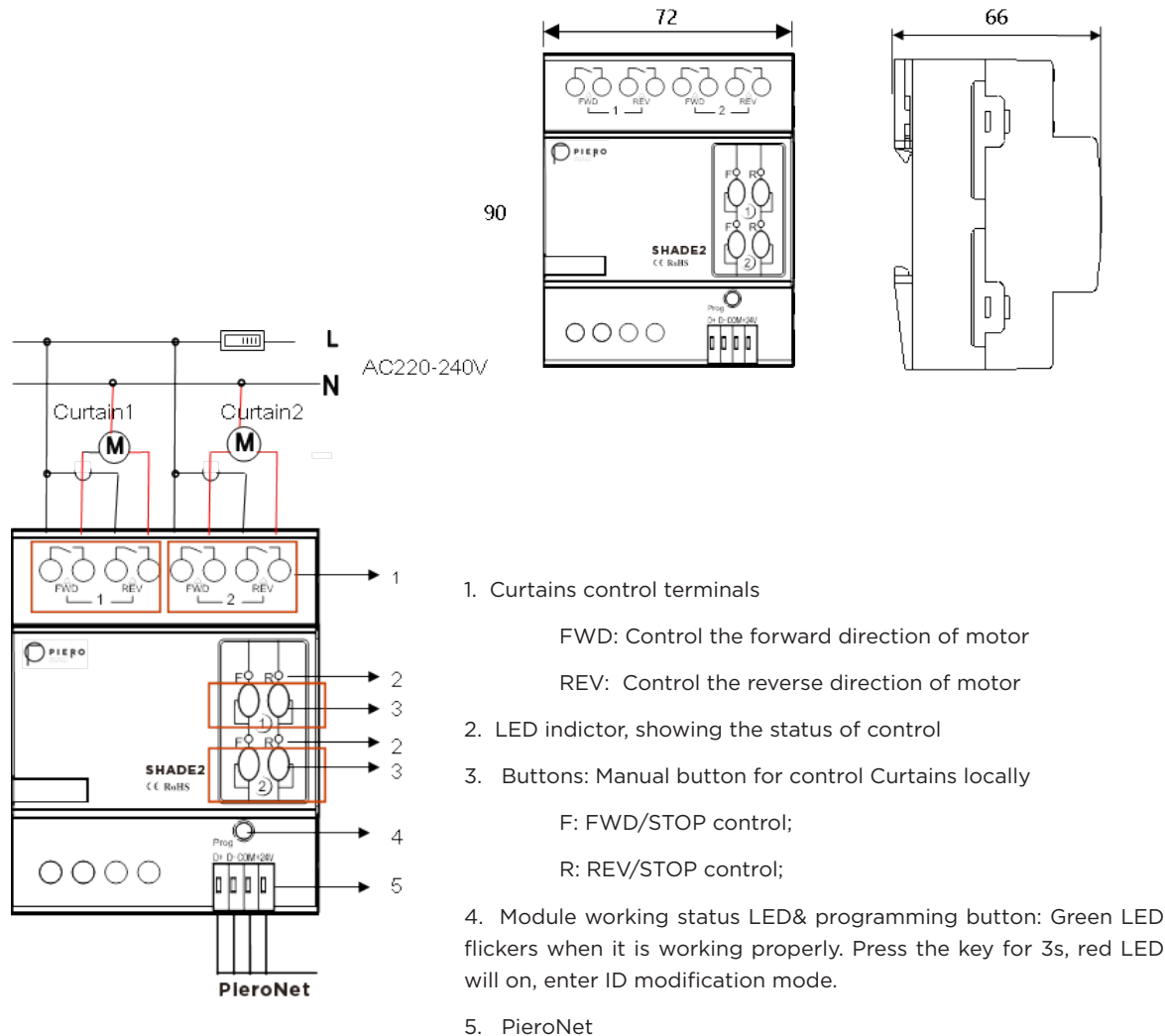
Functions

- 2 channels for curtain control
- Hardware/software interlock protect motor
- Settable curtain running time
- Inching control for Shutter coordinate
- Supports easy programming and online upgrading.

Important Notes

- CAT5E or PieroNet cable
- PieroNet Connection - Series connection (hand-in-hand)
- Check Connections - Re-tighten all connections after installation.
- Output Circuit - The load on the switched circuits must not exceed the specified capacity of 5A, these circuits should be fed via a fuse/circuit breaker.
- Ratings for each output contacts:
 - 240V, 5A, General Use, 30,000 cycles, 40°C;
 - 240V, 1.6FLA/9.6LRA, Motor (PF>=0.6), 30,000 cycles, 40°C;
 - 120V, 5A, General Use, 30,000 cycles, 40°C;
 - 120V, 1.6FLA/9.6LRA, Motor (PF>=0.6), 30,000 cycles, 40°C;

Dimensions and Wiring



Safety Precautions



- The screw down strength should not exceed 0.4Nm.
- Installation-Inside DB box.
- Ensure that the PieroNet interface is correctly connected to the module.
- Do not connect the module to AC power.
- Do not let the module come into contact with liquids or corrosive gases.
- **CAUTION - Risk of Electric Shock - More than one disconnect switch may be required to de-energize the equipment before servicing**
- It does not support connecting the AC motor directly.

Package Contents

- SHADE2
- Datasheet*1
- PieroNet terminal *1

